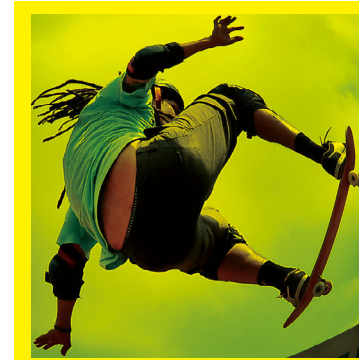


# EXTREME SPORT (CATALOG)

SKATEBOARDS ..... **4**  
 SKATEBOARDS/PROTECTOR ..... **8**  
 HELMET/SCOOTER ..... **9**  
 SKATE ..... **10**



SKATEBOARDS



PROTECTOR



HELMET



SKATE

**SKATEBOARD**  
WME71959

9 Plies Chinese Maple Double Kick Deck  
**Size:** 31"(787mm)\*8"(203mm)  
**Truck:**5"heavy duty aluminium alloy  
**Wheel:** 60\*45MM PU  
**Bear:**ABEC-7  
**Cushion:**PU  
**Packing:**shrink wrap,4pcs/ctn  
**Meas:**85\*20\*36cm G.W.:11kg N.W.:10.5kg



**SKATEBOARD**  
WME71966

9 Plies Chinese Maple Double Kick Deck  
**Size:** 31"(787mm)\*8"(203mm)  
**Truck:**5"heavy duty aluminium alloy  
**Wheel:** 50\*36MM PU  
**Bear:**ABEC-7  
**Cushion:**PU  
**Packing:**shrink wrap,4pcs/ctn  
**Meas:**85\*20\*36cm G.W.:10kg N.W.:9.5kg



**SKATEBOARD**  
WME71874/WME71881

9 Plies Chinese Maple Double Kick Deck  
**Size:**31"(787mm)\*8"(203mm)  
**Truck:** 5"aluminium alloy  
**Wheel:** 50\*36MM PVC  
**Bear:** ABEC-7  
**Cushion:** PVC  
**Packing:** shrink wrap,4pcs/ctn  
**Meas:** 85\*20\*36cm G.W.:10kg N.W.:9.5kg



**SKATEBOARD**  
WME71973

9 Plies Chinese Maple Double Kick Deck  
**Size:** 31"(787mm)\*8"(203mm)  
**Truck:**5"heavy duty aluminium alloy  
**Wheel:** 50\*36MM PU  
**Bear:**ABEC-7  
**Cushion:**PU  
**Packing:**shrink wrap,4pcs/ctn  
**Meas:**85\*20\*36cm G.W.:9.8kg N.W.:9.3kg



**SKATEBOARD**  
WME71850

9 Plies Chinese Maple Double Kick Deck  
**Size:** 31"(787mm)\*8"(203mm)  
**Truck:**5"heavy duty aluminium alloy  
**Wheel:** 50\*36MM PU  
**Bear:**ABEC-7  
**Cushion:**PU  
**Packing:**shrink wrap,4pcs/ctn  
**Meas:**85\*20\*36cm G.W.:10kg N.W.:9.5kg



**SKATEBOARD**  
WME71898/WME71904

9 Plies Chinese Maple Double Kick Deck  
**Size:**31"(787mm)\*8"(203mm)  
**Truck:** 5"aluminium alloy  
**Wheel:** 60\*45MM PVC with light  
**Bear:** ABEC-7  
**Cushion:** PVC  
**Packing:** shrink wrap,4pcs/ctn  
**Meas:** 85\*20\*36cm G.W.:10kg N.W.:9.5kg



**SKATEBOARD**  
WME71867

8 Plies Northeast Chinese Maple Double Kick Cancave Deck  
**Size:** 31"(787mm)x 8"(203mm)  
**Truck:** 5" heavy duty aluminium alloy  
**Wheel:** 50\*36MM PU  
**Bear:** ABEC-7  
**Cushion:** PU  
**Packing:** shrink wrap, 4 pcs/ctn  
**Meas:**85\*20\*36cm G.W.:10.5kg N.W.:10kg



**PLASTIC SKATEBOARD**  
WME98277

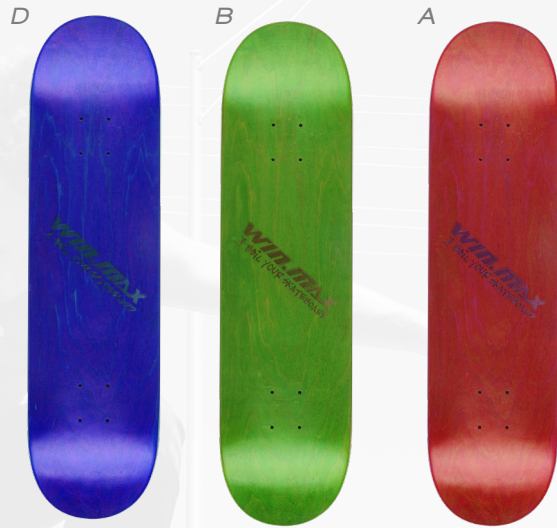
**Material:** PP Plastic  
**Size:** 22.5\*6"  
**Truck:** 3.25" heavy duty alum truck&base  
**Wheel:**60\*45MM PU  
**Bearing:** ABEC-7 Carbon  
**Cushion:**PU  
**Packing:** 61\*16\*48cm,8 pcs/ctn  
 G.W.:14.5kg N.W.:14kg



## CANADIAN MAPLE DECK

WME71829

100%maple deck, 7plies  
**Size:** 31"(787mm)x8"(203mm)  
**Color:** green/blue/red  
**Packing:** 10 pcs/ctn  
**Meas.:** 81x21x16 cm  
**G.W.:** 13kg **N.W.:** 12kg



## SKATEBOARD

WME05220

9 Plies Chinese Maple Double Kick Concave Deck  
**Size:** 31"(787mm)x 8"(203mm)  
**Truck:** 5" heavy duty aluminium alloy  
**Wheel:** 1.99"(50mm)x1.42"(36mm) PU with logo printing  
**Pattern:** heat transfer  
**Bearing:** ABEC-7  
**Grip:** 80AB black grip tape  
**Cushion:** PU  
**Packing:** shrink wrap, 4 pcs/ctn  
**Meas:** 84x21x33cm  
**G.W.:** 11.3kg **N.W.:** 10.3kg



## SKATEBOARD

WME50992

9 Plies Chinese Maple Double Kick Concave Deck  
**Size:** 31"(787mm)x 8"(203mm)  
**Truck:** 5" heavy duty aluminium alloy  
**Wheel:** 1.99"(50mm)x1.42"(36mm) PU with logo printing  
**Pattern:** heat transfer  
**Bearing:** ABEC-7  
**Grip:** 80AB black grip tape  
**Cushion:** PU  
**Packing:** shrink wrap, 4 pcs/ctn  
**Meas:** 87x20.5x32.5cm  
**G.W.:** 8.5kg **N.W.:** 7.5kg



## SKATEBOARD

WME05015

9 Plies Chinese Maple Double Kick Concave Deck  
**Size:** 31"(787mm)x8"(203mm)  
**Truck:** 5" heavy duty aluminium alloy  
**Wheel:** 1.99"(50mm)x1.42"(36mm) PU  
**Pattern:** heat transfer  
**Bearing:** ABEC-7  
**Grip:** 80AB black grip tape  
**Cushion:** PU  
**Packing:** shrink wrap, 4 pcs/ctn  
**Meas:** 85x20.5x33cm  
**G.W.:** 10kg **N.W.:** 9kg



## AIR FORCE SKATEBOARD

WME92282

VELOCTTA  
 Plastic Skateboard  
**Material:** PP plastic  
**Size:** 22.5"x6" with 7cm tail  
**Truck:** 3.25" heavy duty alum truck & base  
**Wheel:** 60x45mm PU wheel  
**Bearing:** ABEC-5 carbon  
**Cushion:** PU  
**Packing:** 61x16x48cm, 8 pcs/ctn  
**G.W.:** 14.5kg **N.W.:** 14kg



## SURF SKATEBOARD

WME71614

CONG

**Surface material:** China maple level 9 layer board  
**Size:** 41 inch X9.5 inch  
**Truck:** 7 "new type of Angle aluminum bracket (stens aluminum color)  
**Wheel:**70\*51MM 85A PU  
**Sandpaper:** 80 AB PVC black non-slip stickers  
**Bearing:** ABEC - 11  
**Cushion:**PU  
**Maximum load bearing:** 180 KGS  
**Packing:** shrink wrap, 2 pcs/ctn  
**Meas:** 113 x25x15cm  
**G.W.:** 8.5kg **N.W.:** 8kg



**LONG SKATEBOARD**

WME55911/WME71577

**Surface material:** China maple level 9 layer board  
**Size:** 41 inch X9.5 inch/42 inch X9.25 inch  
**Truck:** 7 "new type of Angle aluminum bracket (stents aluminum color)  
**Wheel:**70\*51MM 85A PU  
**Bearing:** ABEC - 11  
**Cushion:**PU  
**Maximum load bearing:** 100 KGS  
**Packing:** shrink wrap, 2 pcs/ctn  
**Meas:** 113 x25x15cm  
**G.W.:** 8.5kg **N.W.:** 8kg

WME55911

42x9.5inch



WME71577

**ROUTE**  
41x9.5inch (Multiple pattern is optional)



**PU ELASTOMER WHEEL**

WME05503

PU elastomer wheels  
**Size:** 52.5x30mm  
**Material:** PU  
**Color:** White  
**Packing:** 50 sets/ctn  
**Meas.:** 52.5\*21\*16cm  
**G.W.:** 11.5kg  
**N.W.:** 10.5kg



**PROFESSIONAL PROTECTORS**

WME05718

**ULHUNKA**

Skateboard & Bicycle Protector Set  
**2 Knee pads+2 Elbow pads+2 Wristguards**  
 extra-thick(10mm) foam providing excellent protection  
 anti-loose full elastic band  
**Packing:** each set/mesh bag, 24 sets/ctn  
**Meas.:** 54x36x54cm  
**G.W.:** 12.09kg  
**N.W.:** 11kg



**ADVANCED PROTECTORS**

WME05732

Skateboard & Bicycle Protector Set  
**2 Knee pads+2 Elbow pads+2 Wristguards**  
 anti-loose elastic band  
 high quality foam providing good protection  
**Packing:** each set / mesh bag  
 3 colors asst., 24 sets/ctn  
**Meas.:** 54x38x46cm  
**G.W.:** 9.72kg **N.W.:** 8.26kg



**KID FUN PROTECTORS**

WME05725

**ULHUNKA-KID**

Skateboard & Bicycle Protector Set  
**2 Knee pads+2 Elbow pads +2 Wristguards**  
 fashionable and colorful design  
 competitive price  
**Packing:** each set/mesh bag  
 3 colors asst., 24 sets/ctn  
**Meas.:** 56x35x39cm  
**G.W.:** 6.82kg **N.W.:** 5.46kg



**PROFESSIONAL BICYCLE HELMET**

WME73106

**ABASSODDR**

**Air Vents:** 15  
**Material:** PC + EPS, bladder  
**EPS:** 180g  
**Size:** 58-62CM  
**Color:** red/green  
**Weight:** 210g  
**Feature:** Inregurally molded  
 Compound anti-bacterial lining  
 Head retention system adjustable in height  
**Packing:** color box packing , 12pcs/ctn  
**Ctn Size:** 102x24x61.5 cm  
**G.W.:** 6 KG **N.W.:** 5KG



**RACING HELMET**

WME73113

**TORQUE**

**Air Vents:** 17  
**Material:** ABS+EPS, bladder  
**EPS:** 190g  
**Size:** 58-60cm  
**Color:** red/blue/black  
**Weight:** 350g  
**Packing:** color box packing, 12pcs/ctn  
**Ctn Size:** 102x24x61.5 cm  
**G.W.:** 6 KG **N.W.:** 5KG



**HELMET**

WME75797

**Air Vents:** 11  
**Material:** ABS+EPS, EPS: 110g  
**Size:** S: 52-56cm M: 56-58cm  
**Color:** pink/yellow/blue/green  
**Weight:** 420g  
**Packing:** color box, 12pcs/ctn  
**Ctn size:** 104\*48\*29cm  
**G.W.:** 9.8KG **N.W.:** 7.2KG



**HELMET**

WME75889C/D/W

**CREW**

**Air Vents:** 13  
**Material:** PC+EPS  
**Size:** 46-54cm  
**Color:** yellow/blue/white  
**Weight:** 156g  
**Packing:** color box, 12pcs/ctn  
**Ctn size:** 104\*48\*29cm  
**G.W.:** 5KG **N.W.:** 4KG



**JUNIOR SCOOTER**

WME97416

**Material:**Aluminum/iron  
**Size:** 435\*590mm  
**Wheel size:** 100mm  
**Wheel material:**PU  
**Maximum Load:**100kg  
**Color:** black  
**Ctn Size:**67\*24\*46.5cm 2pcs/ctn  
**G.W.:**9kg **N.W.:**8kg



TWO IN ONE INLINE SKATE

WME77715

Semi-soft Quad/Inline Skate Full

**Chassis:** high impact pp/stronger full aluminum chassis

**Wheel:** 64/70/76x24/PU wheels

**Lining:** comfortable, breathable thick liner.

**Color:** Green/Red

**Size:** S(31-34)/M(35-38)/L(39-42)

**Packing:** 4 pairs/ctn

**Ctn Size:** 50x43x40cm

G.W.: 15.8kg N.W.: 12.8kg

**Bearing:** 608ZZ carbon/ABEC-7



A



B



ADJUSTABLE INLINE SKATE

WME77784

High Quality Professional Semi-soft Adjustable  
Inline Skates

**Chassis:** stronger full aluminum

**Wheels:** 64/70/76x24 PU high rebound casting

**Lining:** multiple fabric materials thick liner.

**Bearings:** ABEC-7 carbon

**Color:** blue/green

**Size:** S(31-34)/M(35-38)/L(39-42)

**Packing:** 6 pairs/ctn

**Ctn Size:** 69x47x35.5cm

G.W.: 16kg N.W.: 11.9kg



PU wheels



Safe Lock Buckles



Easy Slide Size Adjuster



D



B